

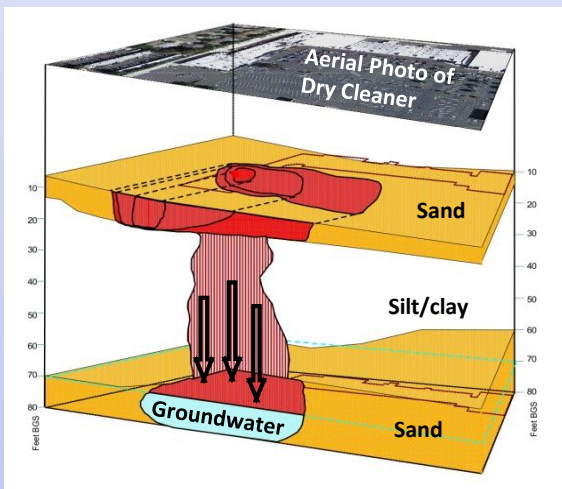
Check out our **latest** record breaking
“NO FURTHER ACTION” DETERMINATION

- Cleanup of soils and groundwater using just SVE
- Completed site closure at 40% under budget

Do you want to be the next?

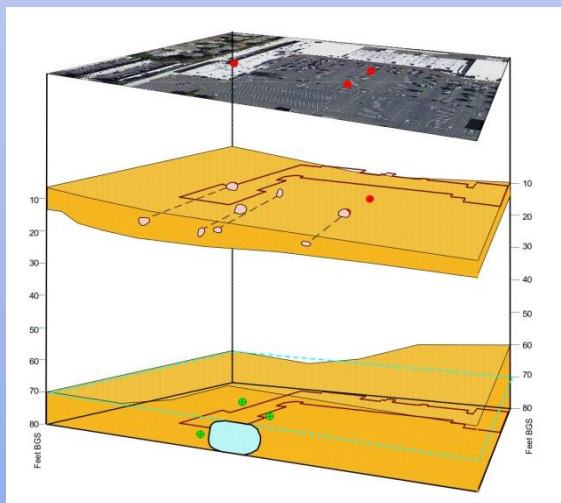
**Cleanup of Dry Cleaner Site
Carmichael, CA June 2017**

Before



- Dry cleaner operated mid-60s to late 90s
- PCE contamination of soils and groundwater
- Up to 15,000,000 $\mu\text{g}/\text{m}^3$ PCE in soil gas, spread over 300' laterally and vertically
- Up to 200 ppb PCE in groundwater at 70' bgs

After



- Soil and groundwater cleaned up to residential standards using a geology-based Soil Vapor Extraction System
- Investigation and cleanup completed in five (5) years
- Completed cleanup \approx 40% under budget
- No vapor intrusion documented by modeling and indoor air sampling

Risk-Based Decisions, Inc.
www.riskbaseddecisions.com (916) 923-0570

