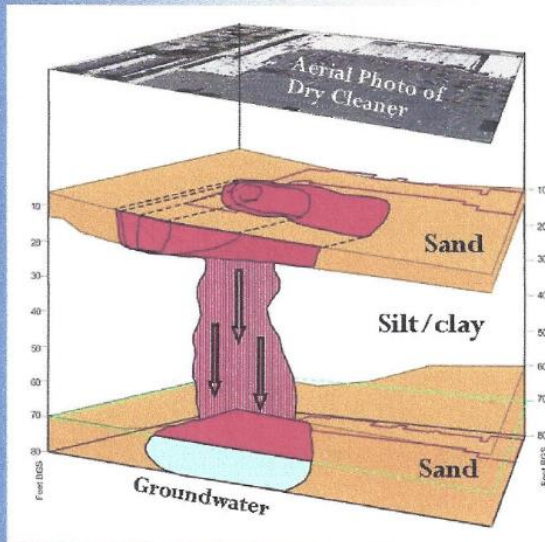


# Cleanup of Dry Cleaner Site

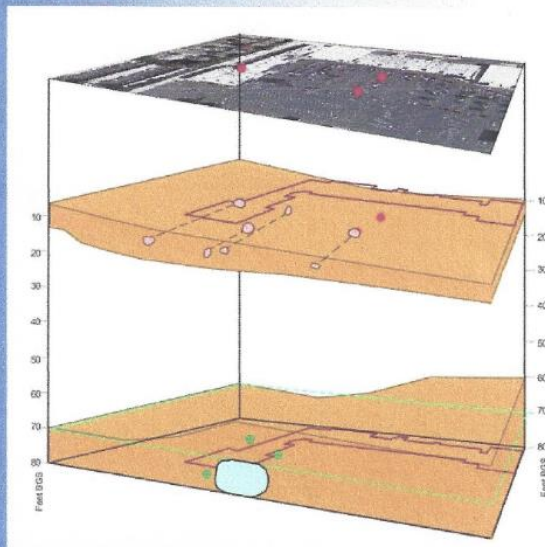
Carmichael, CA June 2017

## Before



- Dry cleaner operated mid-60s to late 90s
- PCE contamination of soils and groundwater
- Up to 15,000,000  $\mu\text{g}/\text{m}^3$  PCE in soil gas, spread over 300' laterally and vertically
- Up to 200 ppb PCE in groundwater at 70' bgs
- Soil and groundwater cleaned up to residential standards using a geology-based Soil Vapor Extraction System

## After



- Investigation and cleanup completed in five years
- Completed cleanup  $\approx$ 40% under budget
- No vapor intrusion documented by modeling and indoor air sampling

Risk-Based Decisions, Inc.  
[www.riskbaseddecisions.com](http://www.riskbaseddecisions.com)

(916) 923-0570